

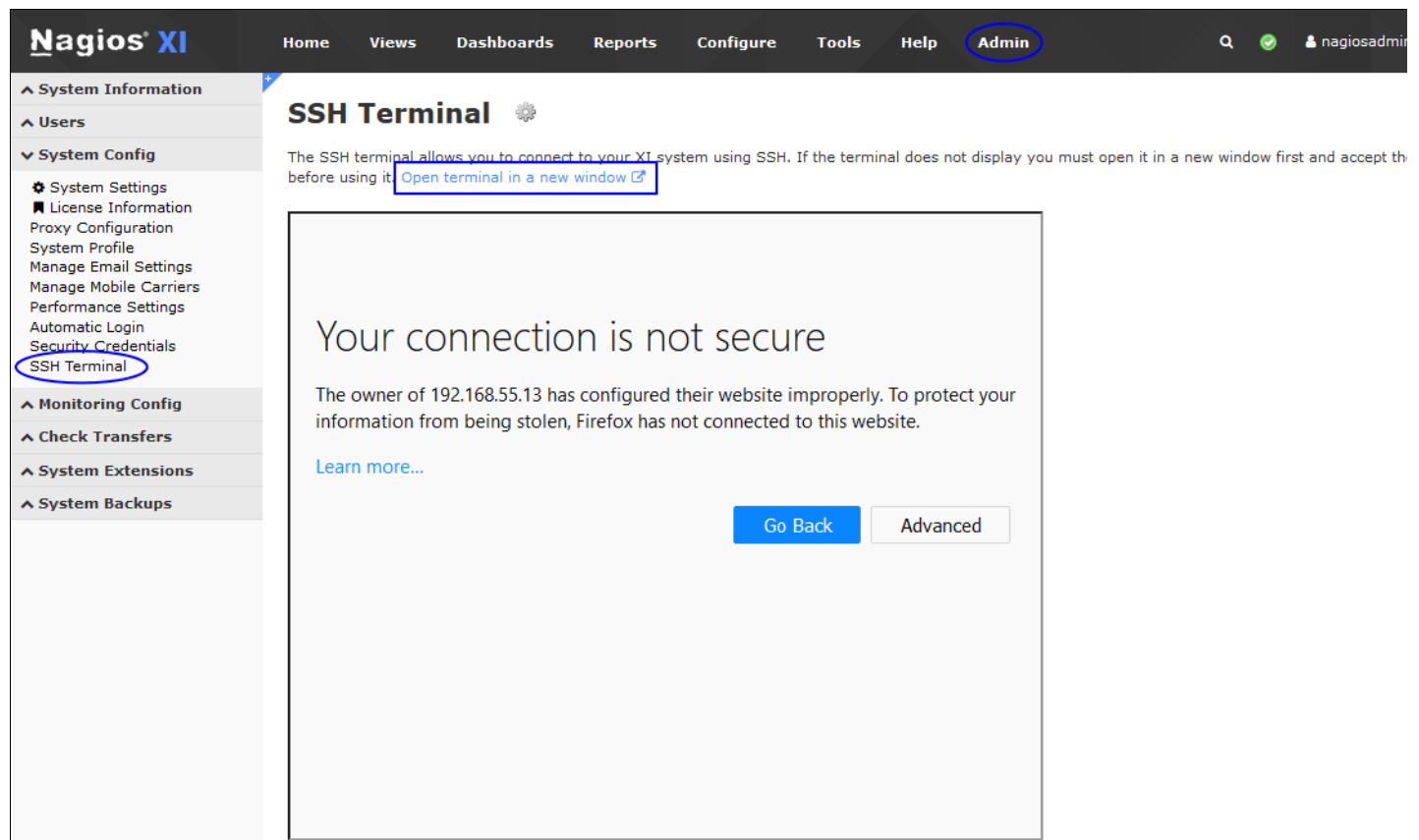
Nagios XI - Using Web SSH Terminal

Article Number: 207 | Rating: Unrated | Last Updated: Thu, Jun 28, 2018 at 9:57 PM

Using Web SSH Terminal

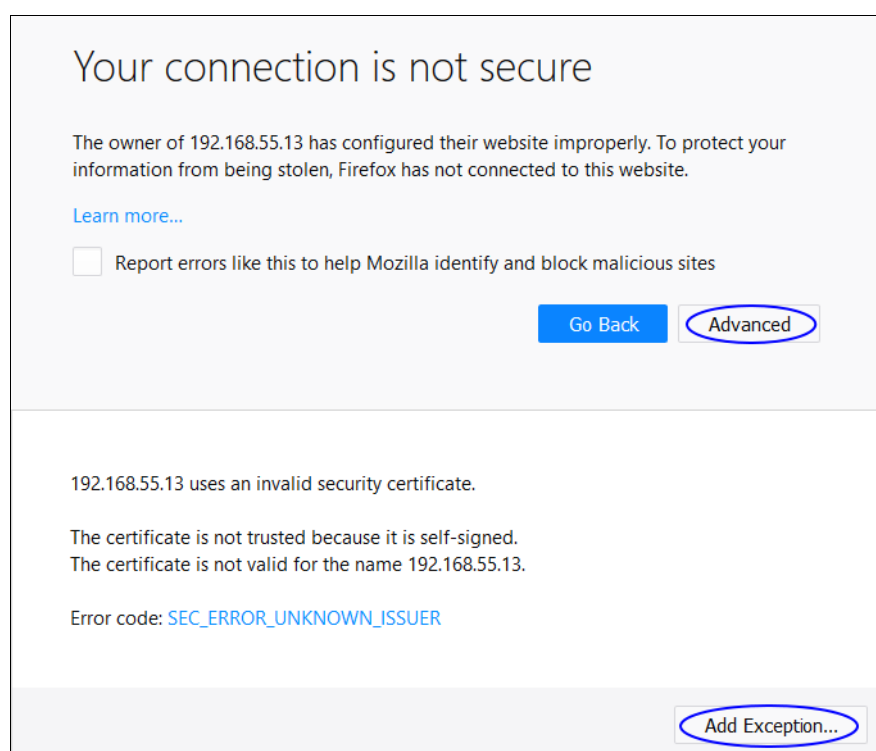
This KB article shows you how to use the web SSH terminal that comes with Nagios XI. The SSH terminal is available as part of the enterprise edition license.

The SSH terminal is located by navigating to **Admin > System Config > SSH Terminal**.



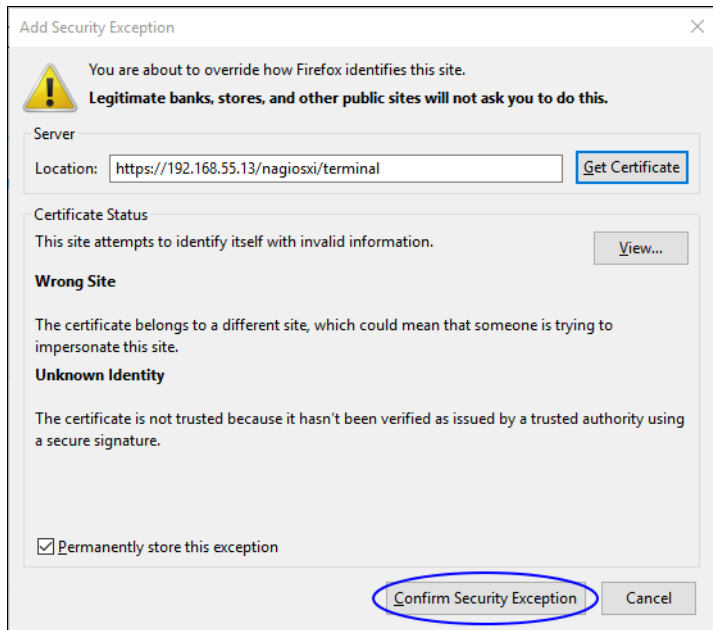
The screenshot shows the Nagios XI Admin interface. The top navigation bar includes Home, Views, Dashboards, Reports, Configure, Tools, Help, and Admin (circled in blue). The left sidebar shows the System Config menu with SSH Terminal circled in blue. The main content area is titled "SSH Terminal" and contains a security warning: "Your connection is not secure". The warning text states: "The owner of 192.168.55.13 has configured their website improperly. To protect your information from being stolen, Firefox has not connected to this website." Below the warning are two buttons: "Go Back" and "Advanced". A link "Learn more..." is also present. A blue box highlights the text "The SSH terminal allows you to connect to your XI system using SSH. If the terminal does not display you must open it in a new window first and accept the before using it." and a link "Open terminal in a new window" with an external link icon.

The terminal uses a self-signed certificate that needs to be added as an exception before it can be used. Click the **Open terminal in a new window** link to do this.

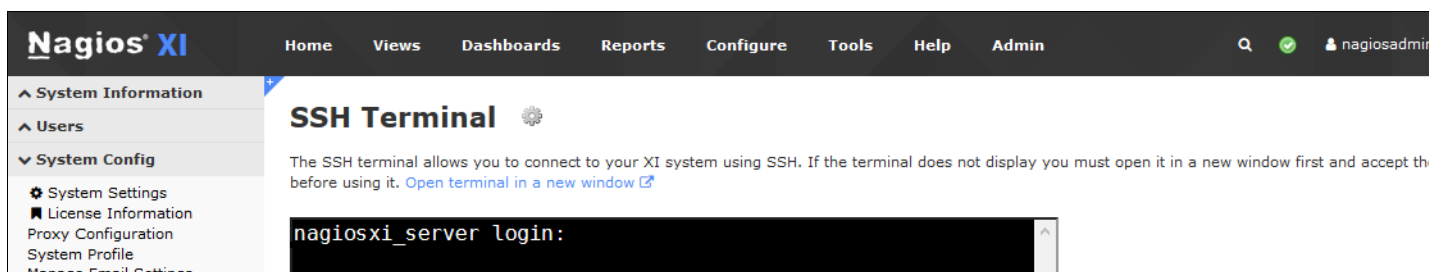


This is a detailed view of the security warning dialog box. It features the heading "Your connection is not secure" and the same warning text as the screenshot above. Below the warning is a "Learn more..." link and a checkbox labeled "Report errors like this to help Mozilla identify and block malicious sites". At the bottom of the dialog are "Go Back" and "Advanced" buttons, with the "Advanced" button circled in blue. Below the dialog, the following text is displayed: "192.168.55.13 uses an invalid security certificate.", "The certificate is not trusted because it is self-signed.", "The certificate is not valid for the name 192.168.55.13.", and "Error code: SEC_ERROR_UNKNOWN_ISSUER". At the bottom right, there is an "Add Exception..." button circled in blue.

This example shows how Mozilla Firefox handles certificate exceptions, other web browsers will have similar methods. Click the **Advanced** button and then click the **Add Exception** I



In the screenshot above you will need to click the **Confirm Security Exception** button to proceed. Once this has done the screen will refresh and the terminal window will appear, c
Refresh the SSH terminal screen by navigating to **Admin > System Config > SSH Terminal**.





Here you are presented with an embedded SSH terminal session. You can login to this just like you would using an SSH client.

Note: Be aware that if you navigate away from this screen your session will be disconnected. You should try and use the **Open terminal in a new window** link where possible to maintain your session.

Final Thoughts

For any support related questions please visit the [Nagios Support Forums](#) at:

<http://support.nagios.com/forum/>

Posted by: **tlea** - Wed, Jan 27, 2016 at 9:53 PM. This article has been viewed 1092 times.

Online URL: <https://support.nagios.com/kb/article/nagios-xi-using-web-ssh-terminal-207.html>